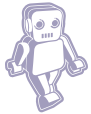




AFFINIPAY®
for associations



Building a Best-in-Class Payment Integration for MCLE with AffiniPay Technology



BINARY MINDS

Several years ago, Larry Rungren, Director of Information Technology

for Massachusetts CLE (MCLE) kicked off an ambitious and wide-reaching project to limit his organization's PCI liability as much as possible. He was looking for a payment processor that could simultaneously keep his organization out of scope while also seamlessly integrating with and facilitating payments through the group's association management system, iMIS.

After more than a year of research and unsuccessful solutions, Larry and his team heard about AffiniPay through an online forum for iMIS users. "After speaking with the team at AffiniPay and hearing about their experience working with both the legal profession and iMIS, it seemed like they fully understood what we wanted to do and had the experience to make it happen," said Rungren.

Once the decision to move forward with AffiniPay's payment platform was made, it came time for the AffiniPay team to work hand-in-hand with MCLE's web developers at Binary Minds to actually build the integration.

APIs that just...worked

When the teams at AffiniPay and Binary Minds got together to start building this integration for MCLE, the teams found success right out of the gate. "We were surprised and happy to find that AffiniPay had great documentation and concrete examples available for us as we started building the integration," said Pawel Dulak, Senior Web Developer at Binary Minds. "Having access to such extensive documentation really helped us jump in and start getting things out."

Additionally the team found that the ease of use of AffiniPay's APIs aided in the integration significantly. "What was great was that the AffiniPay APIs were really straight forward. They were simple and there wasn't anything overly complex or hard to deal with," said Dulak. "We were able to pull examples directly from their documentation and adjust the code to meet MCLE's needs and it just...worked!"

"We were surprised and happy to find that AffiniPay had great documentation and concrete examples available for us as we started building the integration."

Pawel Dulak
Senior Web Developer
Binary Minds





Continuous responsiveness

Additionally, the development team at Binary Minds noted they were continuously impressed by the communication and level of responsiveness they received from the team at AffiniPay. "Everyone we spoke with at AffiniPay was really great and helpful. What's more, they really understand the product inside and out," noted Dulak. "Even if something wasn't explicitly written in the documentation, all we had to do was reach out to someone at AffiniPay and they got back to us immediately with what we needed. The team knew exactly what they were doing and were incredibly responsive."

This level of contact and communication was a relief for the team at Binary Minds as they got further into this project. "We recently did an implementation of a different payment solution with iMIS for another client that had the same goals as MCLE," said Robert Knoerk, Founder and CEO of Binary Minds. "The implementation took A LOT longer primarily because the support from the other payment solution was so horrible. Any time we had a question we were routed through multiple call centers and ended up in a voicemail who knows where. They certainly weren't developer-friendly."

"I think that even a first time developer tackling a project of this magnitude would be able to get the job done if they were working with AffiniPay. They'd be in great hands."

Robert Knoerk
Founder & CEO
Binary Minds



In the end, working with AffiniPay made things much easier for the team at Binary Minds. "I think that the documentation and level of support offered by AffiniPay was great," reiterated Knoerk. "I think that even a first time developer tackling a project of this magnitude would be able to get the job done if they were working with AffiniPay. They'd be in great hands."